

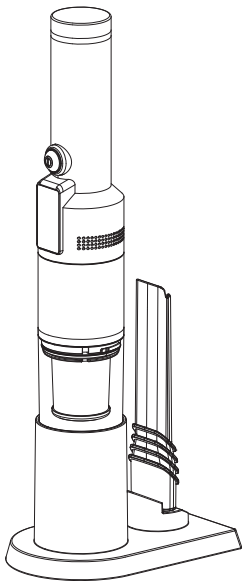
eureka

使用说明书

Instructions Manual

产品型号

A1



使用产品前请仔细阅读本说明书，并要妥善保管，以备查阅。

目录

重要的安全说明	3
产品零部件名称及示意图	4
整机操作说明	5
附件使用说明	6
机器清洁	7
产品日常保养、存放	9
常见故障排除	9
保修卡	10

重要的安全说明

使用本产品时，请遵循如下基本警告：

您的吸尘器是一台电动器具，它必须按照正常使用条件进行使用。切莫让吸尘器在无人看管情况下独自运转。

1、严禁吸入下列物体，否则可能会损坏吸尘器引起火灾，造成人身伤害等意外。

- A、发热物体，如炭火，香烟头等。
- B、大块锐利碎片，如玻璃等。
- C、有害物品（溶剂，腐蚀性，）侵蚀剂（酸剂，清洁剂）及水等液体。
- D、易燃易爆物品，如汽油或酒精制品。
- E、非家用垃圾，如建筑垃圾，水泥等

2、清洁、维修或暂时不用吸尘器时，必须切断电源。

3、确认吸尘器的电源适配器与使用电压必须与供电电压一致，必须采用本机配置的专用电源适配器。

4、切忌将吸尘器浸入水中，避免接近发热器具或暴晒，以免发生火灾。

5、切勿让小孩玩弄、操作吸尘器，以免发生意外。

6、下列情形时，请不要使用吸尘器：

- A、发生跌落并出现明显损坏或运转不正常。
- B、电源适配器破损

遇到这种情况时，为了避免危险，必须由制造商、其维修部或类似部门的专业人员更换。

7、避免在吸入口堵住的状态下长时间运行，以免电机损坏及吸尘器发生变形。



一些特殊人群不适合使用这款产品，例如儿童、有精神疾病人等。请确保儿童不要将该产品当做玩具。

产品零部件名称及示意图

1. TYPE-C 充电口 (背面)

2. 开关按钮

3. LCD显示屏

4. 出风口

5. 过滤组件

6. 尘杯释放按钮

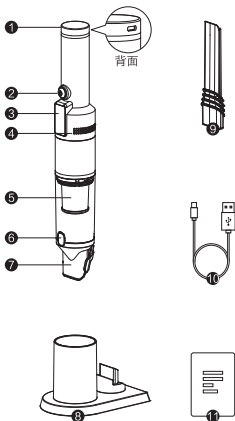
7. 吸口毛刷

8. 充电底座

9. 扁吸

10. USB TYPE-C充电线

11. 使用说明书



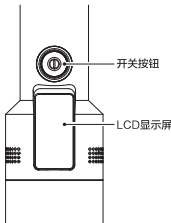
产品技术参数

产品名称	轻量化无线手持吸尘器	产品型号	A1
额定电压	7.4V	额定功率	70W
真空度	≈ 10kPa	尘杯容量	0.1L
产品净重	约500g	产品尺寸	410*60*60mm

整机操作说明

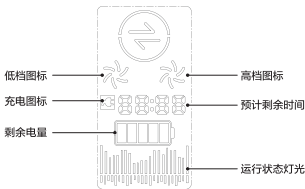
第一次开机及充电：本机出厂状态为了避免运输途中由于碰撞原因主机自动开机，进行了开关锁定设置，需将机器取出包装后，用随机数据线配件联通5V,1A/5V1.5A/5V,2A/5V,3A规格的适配器，并插入本机TYPE_C充电口，进行激活操作，插入数据线之后开关按钮呈呼吸幢亮起，LCD液晶显示屏显示充电。拔出数据线即可正常使用。

注：本机设置为充电充满后约10分钟显示屏进入省电模式，显示屏熄灭，开关按钮蓝灯常亮。



短按开关，整机处于低速档工作，开关按钮常亮。需要高速档，长按开关按钮，即可进行高低档切换操作，运行状态下短按开关，机器关闭，停止工作。

注意：机器工作后LCD液晶显示屏上会显示机器剩余的放电时间，请根据剩余时间合理安排使用，电量图标也会随电量减少逐步熄灭。到全部熄灭。机器停止工作，需要重新充电使用。

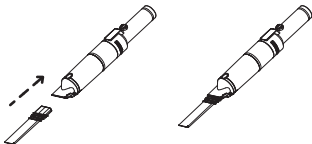


附件使用说明

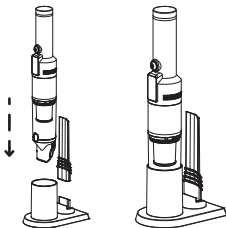
1.吸口毛刷使用：按图中所示吸口毛刷提供两种工作状态，可以伸出，也可以收回，只需轻轻翻转即可。



2.扁吸的使用：一手握住扁吸，另一手握住主机，如下左图所示位置对准用力插入主机，即可使用，沿相反方向用力拔出即可将扁吸取下。



2.底座使用：底座底部配有防滑垫，可以放置于桌面上，只需将吸口毛刷收纳如图示位置，即可按照图示方向将主机插入底座内收纳，同理，扁吸也可以收纳于底座上。



机器清洁

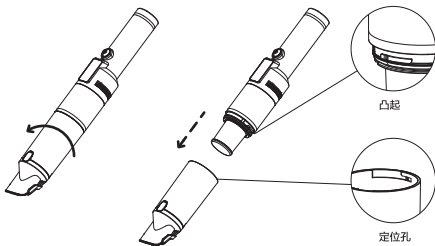
定期清洁过滤组件，因为吸附的棉絮中螨虫有可能没有杀死，会继续繁殖，为避免二次污染，清洁后应对过滤组件进行清洗，或者更换新过滤组件。

1. 关闭机器

2. 本机具有一键倒尘功能，如下左图所示，将吸口对准垃圾桶，按压住尘杯释放按钮，吸头组件即可由于自重的原因，沿箭头方向翻转，垃圾也会由于重力的原因落下。

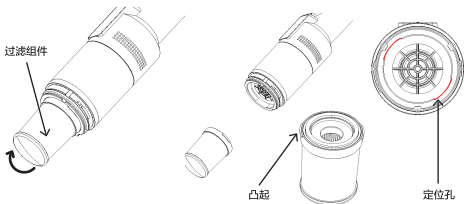


3. 尘杯拆卸：一手握住尘杯，一手握住主机，沿箭头方向相向旋转，即可将尘杯取下，尘杯可以进行清洗，但请充分晒干后再安装复位。安装时对准尘杯上定位孔与主机上凸起装入，相反方向旋入尘杯复位即可。

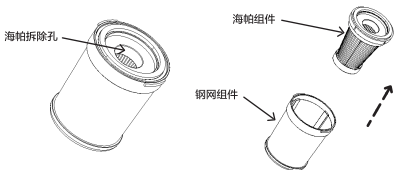


机器清洁

4.清理过滤组件：取下尘杯后，一手握住钢网，一手握住主机沿箭头方向旋转即可取下过滤组件。安装时可先将过滤组件上凸起对准主机上定位孔装入，并沿相反方向旋转即可将过滤组件复位。



5.过滤组件清洁：吸尘器使用一段时间后，由于灰尘的积累，海帕组件需要及时清理，如下图所示，过滤组件拆除后，可将手指伸入到海帕组件的孔内，轻轻用力即可将海帕沿取下。海帕和钢网可以用水清洗，不过需要充分晾干后再安装使用，否则容易造成机器故障。安装时即可沿箭头相反方向将海帕装入到钢网内。



产品日常保养、存放

1. 所有的日常保养和维护工作都必须在吸尘器关电以后进行。
2. 经常清理尘桶内垃圾，避免吸尘器出现故障。
3. 吸尘器表面不可以用汽油或油状物擦洗，应用软布或中性洗洁精擦洗，擦洗时擦布一定要拧干，不可将水渗入吸尘器电器元件内。
4. 存放地要保持干燥。
5. 机器上方不宜堆放重物。

常见故障排除

在遇到如下一般性问题时，用户可自行排查：

注意：发现以下问题时，请立刻关闭开关，防止损害机器和造成其他危害。

问题现象	可能原因	解决方法
无法开机	电池没有电	重新充电
	吸尘器开关没有打开	把开关滑移钮推到开机状态
	电池包没有装上	装上电池包
	吸尘器内部零件损坏	更换吸尘器
产品发出非正常声音	尘灰已满，或风道被堵塞	取出尘桶，清理垃圾或堵塞物
吸入能力降低	灰尘已满，或者过滤太脏	清理尘桶灰尘，清洗过滤器 (清洗过的过滤器，在彻底干燥之前不能安装到产品里，以免损害电机)
	电池电量下降	重新充电后继续使用
使用中有关灰尘吹出	尘桶里过滤装置破损	立刻停止使用，更换新的过滤器
	过滤组件忘记安装	立刻停止使用，把过滤组件安装到位
吸尘器不充电	电源适配器未插入电源	重新把电源适配器插入电源
	电源适配器充电插头未插入机器充电孔内	电源适配器充电插头插入机器充电孔内
	电源适配器损坏	更换电源适配器
	吸尘器内部零件损坏	更换吸尘器

保修卡

注意

1. 此保修卡在购买本公司产品时立即填写；
2. 此保修卡请妥善保管，购买者不必将卡寄回本公司；
3. 维修时请携带此证及有效发票正本。

保修卡

用户姓名

电 话

通讯地址(邮编)

购买商店

维 修 点

编 号

发票号码

购买时间

维修记录

日 期

故障内容

产品型号

处理内容

维修单位名称

电 话

维修员签名

提示: 修理时需出具发票。

售后电话: 400-001-0562

优瑞家科技有限公司

地址: 苏州市工业园区清湖大道39号

编码: 215000

型号: A1

执行标准: GB4706.7-2014/GB4706.1-2005/
GB4343.1-2018/GB17625.1-2012

产品合格证

检查结论: 合格

检查员号: 检验员A1

检查日期: 见生产批号

优瑞家科技有限公司

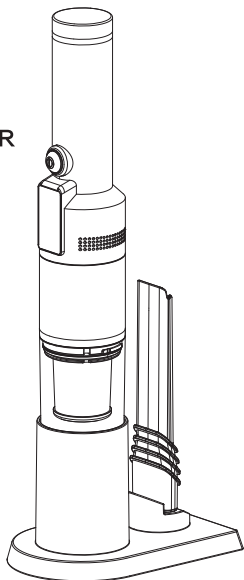


微信扫一扫，服务立马到

eureka

CORDLESS DIGITAL VACUUM CLEANER

Model No. A1



Please read this manual carefully before using the product, and keep this manual safe for future reference.

CATALOGUE

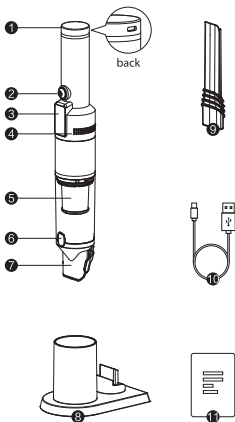
Important Safty Rules	3
Accessories and schematic diagram	4
Operating instructions	5
Accessories operating instructions	6
Machine Cleaning and Assemble	7
Daily Maintenance and Storage	9
Trouble Shooting Guide	9
Warranty Card	10

Important Safety Rules

1. Before using the appliance, carefully read the instructions for use and in particular the safety warnings and follow them. Keep this manual for the entire duration of the appliance's useful life, for consultation purposes. Failure to follow the instructions could cause accidents and void the warranty, relieving the manufacturer of all liability.
2. Before connecting the appliance, check that the mains voltage data shown on the data label correspond to those of the local power supply. The rating label is located on the device itself.
3. Keep all packaging materials (plastic bags, cardboard, polystyrene etc.) out of reach of children as they are potentially dangerous and must be disposed of as required by law.
4. After removing the device from its packaging, check for shipping damage and the integrity of the supply in accordance with the drawing. In case of damage or doubt about the integrity, do not use it and contact the authorized after sales service.
5. To reduce the risk of electric shock, do not use the product outdoors or on wet surfaces.
6. To protect yourself from electric shock, do not immerse the appliance or the cord in water or other liquids. Do not allow the cord to come in contact with hot surfaces.
7. This product can be used by children from 8 years old and by persons with reduced physical, mental or sensory abilities, or without experience and knowledge only if under supervision or if they received instructions regarding the safe use of the product and understand the risks associated with its use.
8. Cleaning and maintenance must not be performed by children without supervision.
9. This product is not a toy. Make sure that children do not play with the appliance.
10. This product has been designed for DOMESTIC use only, it has not been designed for industrial or professional use.
11. Do not suction:
 - Water or other liquids
 - Hot ashes or other inflammable things
 - Sharp objects
 - Piece of wood, chalk, cement, lime and other small granules.
12. In case of failure or malfunction of the appliance, switch it off and do not tamper with it. For any repairs, contact only the authorized after sales centre.
13. Do not pull the mains cable to lift, carry or remove the plug from the socket.
14. Make sure the cable does not have knots or bends.
15. Check the condition of the electric cable. Damaged or knotted cables increase the risk of electric shock.
16. If the power cord is damaged, it must be replaced by the manufacturer or qualified personnel in order to avoid hazards. Do not use the appliance with wet hands or feet.
17. Do not put any objects in the openings.
18. Keep hair, fabrics and other objects away from the product openings as they may clog.
19. Keep away from liquids or flammable products.
20. Do not use the appliance to vacuum lit cigarettes or still hot ashes.
21. Do not use the appliance without having first put the filter into the specific space.
22. Do not use the appliance towards people or animals. Always use the vacuum cleaner with the appropriate filter.
23. **WARNING:** charge the product using only the power supply provided by the manufacturer. During the charging phase, the power supply will be hot to the touch, this is completely normal and does not constitute a defect in the appliance.
24. Make sure to switch off the appliance before proceeding with the engine refill.
25. Keep the vacuum cleaner away from stoves and appliances that emit heat. Heat can deform and discolour the plastic parts of the unit.
26. Always disconnect the plug from the socket when the appliance is not being charged.
27. Dispose of battery safely in accordance with current standards. The battery included in the product cannot be removed by the user and the authorized center
28. Never use alcohol or other solvents to clean the appliance.
29. Do not insert any object into the openings or holes of the appliance. Do not obstruct the openings in any way, keep them clean from dust, filaments, hair and anything that may reduce the airflow.
30. Keep hair, loose clothing, fingers and all parts of the body away from openings and moving parts.

Accessories and schematic diagram

1. TYPE-C charge inlet (back)
2. Switch button
3. LCD display screen
4. Air outlet
5. Hepa filter
6. Dust cup release button
7. Brush
8. Charging base
9. Crevice tool
10. USB TYPE-C cable
11. Instruction manual



Product Specifications

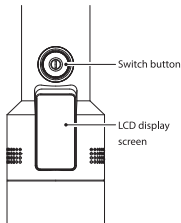
Product category	Cordless slim vacuum cleaner	Model no.		A1
Rated Voltage	7.4V	Rated power		70W
Vacuum	≥10kPa	Dust cup capacity		0.1L
Unit weight	约500g	Unit size		410*60*60mm

Operating instructions

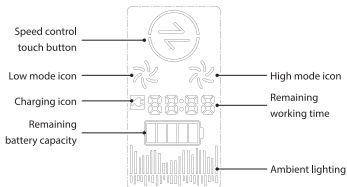
H2 is a vacuum cleaner powered only by a rechargeable battery, i.e. it cannot be used when connected to the mains.

Turn on the machine, the whole machine is working at low speed, and the switch button is always on, touch the button on LCD display screen to change to high mode.

Note: After the machine is working, the remaining discharge time of the machine will be displayed on the LCD screen. The battery icon will also decrease as the battery power decreases. When the battery icon is empty, the machine will stop working. And needs to be recharged.



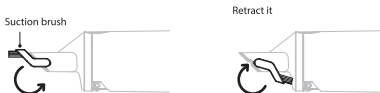
When the machine is fully charged, it will enter the power-saving mode after 10 minutes, the LCD display screen will be off, but the blue light on the switch button is always on.



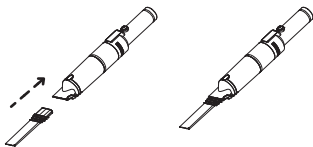
Note: If the vacuum cleaner is blocked, turn off the vacuum cleaner. Clean the vacuum cleaner hole and try to restart.

Accessories operating instructions

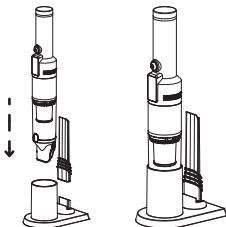
1. Use of the suction brush: According to the figure, the suction brush provides two working modes, which can be extended or retracted, just flip it gently to retract it.



2. Use of the crevice tool: hold the crevice tool with one hand and the main unit with the other hand, align the position as shown in the left figure below and insert the main unit forcefully, then it can be used to clean sofa, gaps etc, pull it out in the opposite direction to remove the crevice tool.



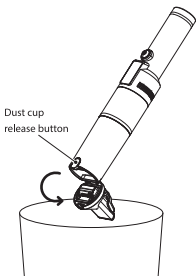
3. Use of the base: The bottom of the base is equipped with a non-slip mat, which can be placed on the desktop. Retract the suction brush as shown above, and then insert the machine into the base in the direction shown in the figure. In the same way, the crevice tool can also be stored on the base.



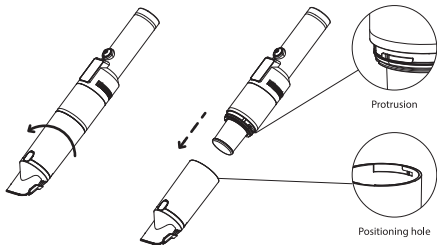
Machine Cleaning and Assemble

Clean the filters regularly or replace it 2-3 months.

1. Turn off the machine
2. This machine has a one-button dust dumping function. As shown in the left figure below, align the suction mouth with the trash can, press the dust cup release button, and the suction head assembly can move along the arrow due to its own weight, the dusts could be empty then.

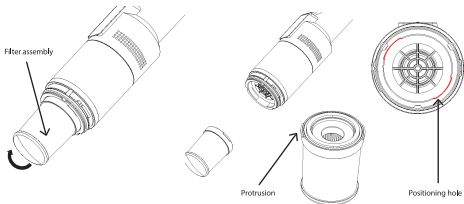


3. Clean and assemble of dust cup: Hold the dust cup with one hand and the main unit with the other hand, and then rotate in the direction of the arrow to remove the dust cup. The dust cup then can be cleaned under running water, but please dry it fully and then reassemble. When reassembling, align the positioning holes on the dust cup and the protrusions on the main unit, and screw in the dust cup in the opposite direction to reset.

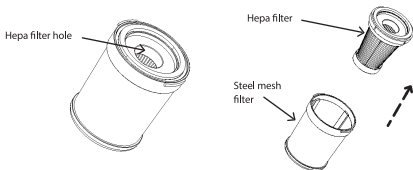


Machine Cleaning and Assemble

4. Clean and assemble of the filter assembly: After removing the dust cup, hold the steel mesh with one hand, and rotate the main unit with the other hand to remove the filter assembly, then you could clean the filter assembly under running water. To assemble back, align the protrusion on the filter assembly with the positioning hole on the machine and assemble it, and rotate in the opposite direction to reassemble back the filter assembly.



5. Clean and assemble of the HEPA filter: After the vacuum cleaner has been used for a period of time, due to the accumulation of dust, the HEPA filter needs to be cleaned in time. As shown in the figure below, after the filter assembly is removed, you can put your finger into the hole of the Hepa filter and remove the HEPA filter with light pressure. Hepa and steel mesh can be cleaned with water, but they need to be fully dried before installation and use, otherwise it is easy to cause machine failure. The Hepa filter can be assembled back into the steel mesh in the direction opposite to the arrow.



Daily Maintenance and Storage

1. All daily maintenance and maintenance work must be performed after the vacuum cleaner is turned off.
2. Regularly clean the dusts in the dust cup to avoid malfunction of the vacuum cleaner.
3. The surface of the vacuum cleaner should not be scrubbed with gasoline or oil. Use a soft cloth or neutral detergent to scrub. The cloth must be wrung out during scrubbing in case water penetrate into the electrical components.
4. Keep the storage area dry.
5. Do not stack heavy objects on top of the machine.

Trouble Shooting Guide

Problem	Possible reason	Solution
Vacuum cleaner does not work	Low battery	Recharge the battery with the special charging device provided in the package
	The charger does not supply the voltage needed to recharge the batteries	The charger does not work properly, contact the after sales service for a replacement
	The security system has intervened	Remove the obstructions and wait a few minutes
	The appliance needs maintenance	Contact the after sales service
Abnormal noise	Dust cup is full	Empty the dust cup.
	HEPA filter is blocked	Clean the HEPA filter or replace it
Suction power is weak	Dust cup is full	Empty the dust cup
	HEPA filter is blocked	Clean the HEPA filter or replace it
	Low battery	Recharge the battery
Dust escaping from hand vacuum	Dust cup is full	Empty the dust cup
	Hepa filter is not installed correctly	Clean the HEPA filter or replace it

Warranty Card

⚠ CAUTION

1. This warranty card should be immediately filled after purchase.
2. Keep this warranty card for your records; it does not need to be returned to eureka.
3. Bring / provide the warranty card and original invoice for service requests.

Warranty card

User name

Tel

Contact address (Post code)

Purchase location name and address

Service/maintenance supplier

Serial No.

Invoice No.

Purchase date

Record of Maintenance

Date

Problem description

Product model

Detailed information

Service technician name

Tel

Service technician signature

Tip: original proof of purchase (store invoice) is required for any service request.

Eureka Intelligent Technology Co., Ltd

Address: No.39 Caochu Avenue, Industrial Park, Suzhou, Jiangsu Province

Post: 215000

Version No.: FC9 Plus10-06-R1.0

Executive standard: GB4706.7-2014/GB4706.1-2005/GB4343.1-2018/GB17625.1-2012



scan WeChat for service